

DEVELOP

Dynamic balance

www.develop.eu



Want to make it
your
own device?

OFFICE PRODUCTS



Choose DEVELOP

Every industry faces different challenges. Every business has different needs. Yours is no exception. At DEVELOP we are focused on meeting your specific document production and management demands – no matter whether you're a start-up, small business or mid-sized company. We do this by providing multifunctional office devices that can be customised to your specific requirements. Discover the benefits you enjoy with DEVELOP.

Wouldn't it be great to enjoy optimal **ease of use**?

We offer you solutions that adapt to your daily working habits and save a lot of time in routine office tasks like printing, scanning or copying. You can customise the individual screen features, specific functions and workflows to be activated via your ineo device's display. Frequently used functions can be placed on your start screen while functions you don't use can simply be removed.

Ever dreamed of using a personally **customised device**?

You can now make your ineo device a true part of your business. Start with your own company logo, display a Flash video when the display is idle, customise your user interface on the screen, and have your business-relevant apps accessed straight from the operating panel.

Useful apps, remote app updates, connectors to cloud solutions such as Google Drive or Google Mail, paper templates – just about everything you need to improve your business processes is available from DEVELOP's dstore.

www.dstore.develop.eu

Want to enjoy more **mobility** at work?

More and more businesses are transforming their offices into mobile workplaces. Employees enjoy the flexibility of working where they want, yet still need to stay connected. DEVELOP makes printing from a mobile device even easier and more intuitive than from a PC. You don't even need to download external apps or install a specific printer driver – our mobile features integrate seamlessly with innovative mobile technologies to let you print from your tablet or smartphone with just one click. Our security functionality ensures your data are safe, and on most ineo devices, access to safety features like secure print, user authentication and account tracking comes with the free app ineoPRINT.

ineoPRINT

The free ineoPRINT app connects iOS or Android devices to ineo systems, for intuitive printing and scanning.

With ineoPRINT, documents can be printed from, or scanned to the main cloud storage platforms, bringing the documents to your hand anytime you need them.

Download the free ineoPRINT app directly from the AppStore or Google Play Store.





Wouldn't you like to optimise your **workflow integration**?

It's easier than you might think. Our devices can easily be integrated into any existing network and help to optimise document workflows – with integrated device functionalities or professional solutions working hand in hand with our systems, e.g. the DEVELOP apps convert+share and store+find. Besides, DEVELOP offers remote monitoring of your printer fleet and helps reduce inefficiency in fleet management. Why not let our know-how optimise your workflow processes!

Still worrying about **data security**?

In today's business environment company data have to cross a lot of different data highways, and much of your corporate data runs through your multifunctional system(s). DEVELOP ensures your data stay safe and no document ends up in the wrong hands. Thanks to the Common Criteria/ISO 15408 IEEE 2600.1 certification, access control, data security and network encryption you can be sure your data stay where they belong – in the right hands!

www.dstore.develop.eu

DEVELOP's software solutions replace time-consuming manual operations with automated processes:

convert+share

Scan a document in various file formats, then send the file straight to whatever destination you want, e.g. Google Drive, Evernote or Microsoft SharePoint.

store+find

Locate any document easily and quickly via a keyword or full-text search facility. Store documents in a very wide range of file formats. And simply add electronic documents to store+find, or import them direct from MS Office.

ineo connector apps

Three custom-developed apps connect ineo office systems to the most popular cloud services Google Apps™, Evernote™ and Microsoft SharePoint™. These apps support the mobility and flexibility demanded in modern-day offices.



ineo Navigator

Want a quick overview of the different functions of your ineo system(s)? Join the free online learning platform ineoNavigator and get to know your ineo device(s) fast. Printing, scanning, copying and faxing – the usage explanations are clearly structured and flexible.

Benefits

- > Free of charge
- > Access at any time and as long as needed
- > No dependency on hotlines
- > No external instructor required
- > No unproductive waiting time

www.ineo-navigator.develop.eu



Wouldn't **great design** liven up your office?

DEVELOP systems not only make an impression with their high quality and reliability, but also their cool design. There is bound to be high spirits in your office! Whether you choose one of the fashionable designs that are ready to make your office even more attractive, or if you create your own ineo decor that perfectly matches to your environment. Contact your DEVELOP partner and discover the ineo decors.

Know the benefits **green efficiency** brings your business?

Our planet's survival depends on how we care for the environment today. As a company we are proud of our ISO 14001 environmental certification and production facilities that work to the zero-waste principle. But even more importantly for you, all our office devices are environment-friendly, e.g. with recyclable components and energy-saving features to reduce power consumption. ENERGY STAR and Blue Angel awards are proof of their environmental friendliness. And that means a better carbon footprint for your business and money saved through lower electricity bills.

Keen to **cut costs**?

Ease of use, customisation, green efficiency, optimised document processes: what do all these benefits have in common? They save your staff time and effort, and your business money. To cut your document production and management costs all you have to do is invest in a DEVELOP device.



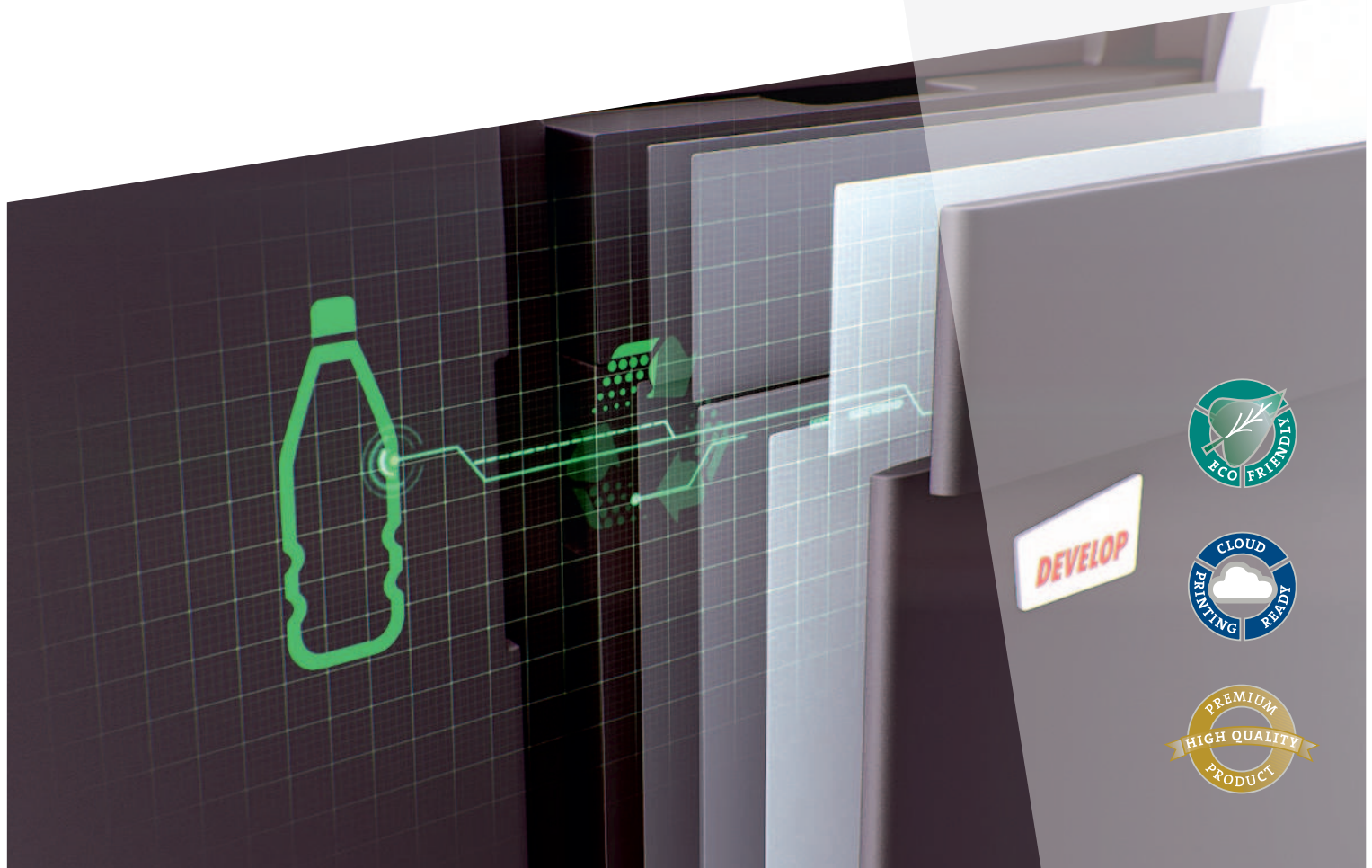
> ENERGY STAR

As part of an energy-saving programme for office equipment, products that meet specific standards can be registered as ENERGY STAR devices. In particular, the devices power down when not in use to save electricity. All new DEVELOP devices are ENERGY STAR-qualified.



> Blue Angel

Since 1978, the Blue Angel seal has been awarded to environment-friendly products. Blue Angel evaluates a product's energy consumption, noise emissions and recyclability. Since energy consumption is directly related to CO₂ emissions, a crucial greenhouse gas, Blue Angel devices are helping to reduce CO₂ emissions. DEVELOP has continued to receive certification for new products by clearing the certification bar each time it has been raised.



DEVELOP

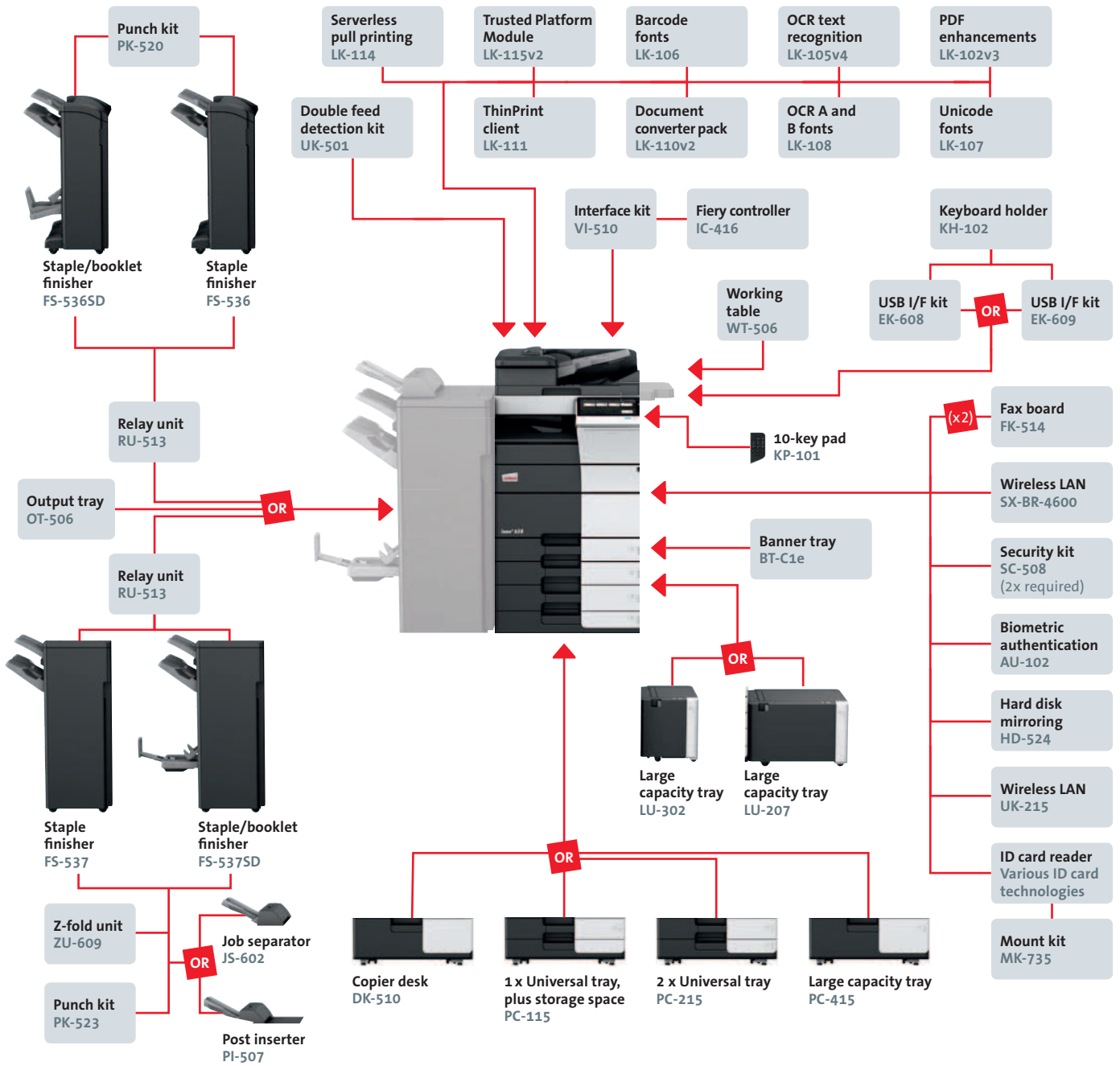
Dynamic balance

www.develop.eu

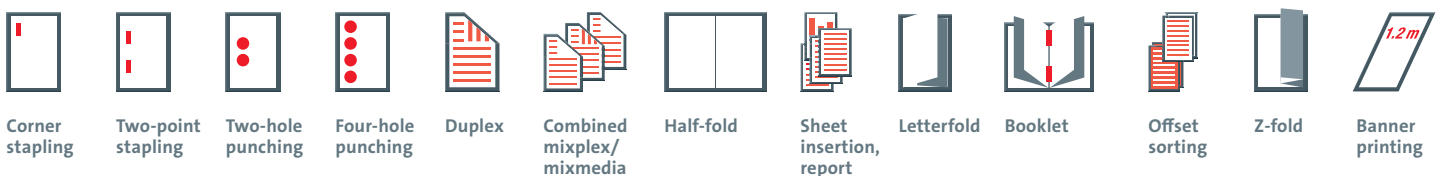


ineo+ 658

- > Colour
A3 multifunctional
- > Up to 65 ppm



Finishing functionalities



ineo+ 658

A3 multifunctional with 65 ppm b/w and colour. Standard ineo print controller with PCL 6, PCL 5c, PostScript 3, PDF 1.7 and XPS support. Paper capacity of 500 + 500 sheets and 150-sheet manual bypass. Media from A6 to SRA3, 1.2 m banner and 52–300 g/m². 4 GB memory, 250 GB hard disk and Gigabit Ethernet standard

PC-115 1x Universal tray	A5–A3, 500 sheets, 52–256 g/m ²
PC-215 2x Universal tray	A5–A3, 2 x 500 sheets, 52–256 g/m ²
PC-415 Large capacity tray	A4, 2,500 sheets, 52–256 g/m ²
DK-510 Copier desk	Provides storage space for print media and other materials
LU-207 Large capacity tray	A4–SRA3; 2,500 sheets; 52–256 g/m ²
LU-302 Large capacity tray	A4; 3,000 sheets; 52–256 g/m ²
FS-536 Staple finisher	50-sheet stapling; 3,200 sheets max. output
FS-536SD Booklet finisher	50-sheet staple finisher; 20-sheet booklet finisher; 2,200 sheets max. output
RU-513 Relay unit for FS-536(SD)/FS-537(SD)	For FS-536(SD)/FS-537(SD) installation (Max. 100 sheets output capacity)
PK-520 Punch kit for FS-536(SD)	2/4 hole punching; autoswitching
FS-537 Staple finisher	100-sheet stapling; 3,200 sheets max. output
PK-523 Punch kit for FS-537(SD)	2/4 hole punching; autoswitching
FS-537SD Booklet finisher	100-sheet staple finisher; 20-sheet booklet finisher; 2,700 sheets max. output
PI-507 Post inserter for FS-537(SD)	Cover insertion; post-finishing
JS-602 Job separator for FS-537(SD)	Separation of fax output etc.
ZU-609 Z-fold unit for FS-537(SD)	Z-fold for A3 prints

OT-506 Output tray	Output tray for use instead of finisher
KP-101 10-key pad	For use instead of touchscreen
WT-506 Working table	Authentication device placement
FK-514 Fax board	Super G3 fax; digital fax functionality
IC-416 Fiery controller	Professional colour print controller
VI-510 Interface kit for IC-416	Fiery controller interface card
KH-102 Keyboard holder	To place USB keyboard
EK-608 USB I/F kit	USB keyboard connection
EK-609 USB I/F kit	USB keyboard connection; Bluetooth
ID card reader	For various ID card technologies
MK-735 Mount kit	Installation kit for ID card reader
AU-102 Biometric authentication	Finger vein scanner
SC-508 Security kit	Copy guard function (2 kits required)
BT-C1e Banner tray	Multi-page banner feeding
LK-102v3 PDF enhancements	PDF/A (1b); PDF encryption; digital signature
LK-105v4 OCR text recognition	Searchable PDF and PPTX, PDF/A (1a)
LK-106 Barcode fonts	Supports native barcode printing
LK-107 Unicode fonts	Supports native Unicode printing
LK-108 OCR A and B fonts	Supports native OCR A and B font printing
LK-110v2 Document converter pack	Generates various file formats incl. DOCX, XLSX and PDF/A
LK-111 ThinPrint® Client	Print data compression for reduced network impact
LK-114 Serverless pull printing	Secure and Follow Me printing solution requiring no server application
LK-115v2 TPM activation	Trusted Platform Module for protection of data encryption and decryption
SX-BR-4600 Wireless LAN	Wireless LAN to network connector
UK-501 Double feed detection kit	Multi-feed detector to reduce errors and paper jams
HD-524 Hard disk mirroring	Back-up HDD
UK-215 Wireless LAN	Wireless LAN and wireless LAN Access Point Mode

Technical specifications

SYSTEM SPECIFICATIONS

Panel size/resolution	10.1" / 1,024 x 600
System memory (standard/max)	4,096 MB
System hard disk	250 GB (standard)
Interface	10/100/1,000-Base-T Ethernet; USB 2.0; Wi-Fi 802.11b/g/n (optional)
Network protocols	TCP/IP (IPv4 / IPv6); NetBEUI; SMB; LPD; IPP; SNMP; HTTP
Automatic document feeder (standard/optional)	Up to 300 originals; A6–A3; 35–210 g/m ² ; Dual scan ADF
Printable paper size	A6–SRA3, customised paper sizes; banner paper max. 1,200 x 297 mm
Printable paper weight	52–300 g/m ²
Paper input capacity (standard/max)	1,150 sheets/6,650 sheets
Paper tray input (standard)	1x 500 sheets, A5–A3, 52–256 g/m ² ; 1x 500 sheets, A5–SRA3, 52–256 g/m ²
Paper tray input (optional)	1x 500 sheets, A5–A3, 52–256 g/m ² ; 2x 500 sheets, A5–A3, 52–256 g/m ² ; 1x 2,500 sheets, A4, 52–256 g/m ²
Large capacity tray (optional)	1x 3,000 sheets, A4, 52–256 g/m ² ; 1x 2,500 sheets, A4–SRA3, 52–256 g/m ²
Manual bypass	150 sheets, A6–SRA3, custom sizes, banner, 60–300 g/m ²
Automatic duplexing	A5–SRA3; 52–256 g/m ²
Finishing modes (optional)	Offset; group; sort; staple; punch; post insertion; z-fold; half-fold; letter fold; booklet
Output capacity (standard)	Max.: 250 sheets
Output capacity (optional)	Max.: 3,300 sheets
Stapling	Max.: 100 sheets or 94 sheets + 2 cover sheets (up to 209 g/m ²)
Stapling output capacity	Max. 1,000 sheets

Letter fold	Max. 3 sheets
Letter fold capacity	Max.: 30 sheets; unlimited (without tray)
Booklet	Max.: 20 sheets or 19 sheets + 1 cover sheet (up to 209 g/m ²)
Booklet output capacity	Max.: 100 sheets; unlimited (without tray)
Copy/print volume (monthly)	Rec.: 33,000 pages; max.: 200,000 pages ¹
Toner lifetime	Black up to 28,000 pages; CMY up to 26,000 pages
Imaging unit lifetime	Black up to 150,000 pages/600,000 pages (Drum/Developer) CMY up to 105,000 pages/600,000 pages (Drum/Developer)
Power consumption	220–240 V / 50/60 Hz; less than 1.6 kW
System dimensions (W x D x H)	615 x 693 x 961 mm (without options) 615 x 693 x 1,200 mm (with desk/tray)
System weight	Approx. 113 kg (without options)

PRINTER SPECIFICATIONS

Print resolution	1,800 (equivalent) x 600 dpi; 1,200 x 1,200 dpi
Page description language	PCL6 (XL 3.0); PCL 5c; PostScript 3 (CPSI 3016); XPS
Operating systems	Windows 7 (32/64); Windows 8 (32/64); Windows 10 (32/64); Windows Server 2008 (32/64); Windows Server 2008 R2; Windows Server 2012; Windows Server 2012 R2; Windows Server 2016; Macintosh OS X 10.9 or later; Unix; Linux
Printer fonts	80 PCL Latin; 137 PostScript 3 Emulation Latin
Print functions	Direct print of PCL, PS, TIFF, XPS, PDF (v1.7), encrypted PDF files and OOXML (DOCX, XLSX, PPTX); mixmedia and mixplex; "Easy Set" job programming; overlay; watermark; copy protection; carbon copy print
Mobile Printing	AirPrint (iOS), Mopria (Android), Google Cloud Print (optional), WiFi Direct (optional), ineoPRINT (iOS & Android), NFC Authentication and Pairing (Android)

PRINTER SPECIFICATIONS (OPTIONAL)

Print controller	Embedded Fiery IC-416
Controller CPU	CPU type @ 2.9 GHz
Memory / HDD	2,048 MB / 250 GB
Page description language	Adobe PostScript 3 (CPSI 3020), PCL 6, PCL 5c
Operating systems	Windows 7 (32/64); Windows 8 (32/64); Windows 10 (32/64); Windows Server 2008 (32/64); Windows Server 2008 R2; Windows Server 2012; Windows Server 2012 R2; Windows Server 2016; Macintosh OS X 10.9 or later, Linux

SCANNER SPECIFICATIONS

Scan speed (mono/colour)	Up to 120/120 ipm in simplex Up to 240/240 ipm in duplex
Scan resolution	Up to 600 x 600 dpi
Scan modes	Scan-to-E-mail (Scan-to-Me), Scan-to-SMB (Scan-to-Home), Scan-to-FTP, Scan-to-Box, Scan-to-USB, Scan-to-WebDAV, Scan-to-DPWS, Scan-to-URL, Network TWAIN scan
File formats	JPEG; TIFF; PDF; compact PDF; encrypted PDF; XPS; compact XPS; PPTX Optional: searchable PDF; PDF/A 1a and 1b; searchable DOCX/PPTX/XLSX
Scan destinations	2,100 (single + group); LDAP support
Scan functions	Annotation (text/time/date) for PDF; up to 400 job programs; real-time scan preview

COPIER SPECIFICATIONS

Imaging technology	Laser
Toner technology	HD polymerised toner/polymerised toner
Copy/print speed A4 (mono/colour)	Up to 65/65
Copy/print speed A3 (mono/colour)	Up to 32/32
Autoduplex speed A4 (mono/colour)	Up to 65/65
1st copy out time A4 (mono/colour)	3.0 sec. / 4.0 sec.
Warm-up time	Approx. 22 sec. in mono; 35 sec. in colour ²
Copy resolution	600 x 600 dpi
Gradation	256 gradations
Multicopy	1–9,999
Original format	A5–A3, custom sizes
Magnification	25–400 % in 0.1 % steps; auto-zooming
Copy functions	Chapter; cover and page insertion; proof copy (print and screen); adjustment test print; digital art functions; job setting memory; poster mode; image repeat; overlay (optional); stamping; copy protection

¹ If the maximum volume is reached within a period of one year, then a maintenance cycle must be performed.

² Warm up time may vary depending on the operating environment and usage

DEVELOP

Konica Minolta Business Solutions Europe GmbH
Europaallee 17 30855 Langenhagen Germany Phone +49 511 7404-0 www.develop.eu

FAX SPECIFICATIONS

Fax standard	Super G3 (optional)
Fax transmission	Analogue, i-Fax, Colour i-Fax, IP-Fax
Fax resolution	Up to 600 x 600 dpi
Fax compression	MH; MR; MMR; JBIG
Fax modem	Up to 33.6 Kbps
Fax destinations	2,100 (single + group)
Fax functions	Polling; time shift; PC-Fax; receipt to confidential box; Receipt to E-mail/FTP/SMB; up to 400 job programs

USER BOX SPECIFICATIONS

Storable documents	Up to 3,000 documents or 10,000 pages
Type of user boxes	Public; Personal (with password or authentication); Group (with authentication)
Type of system boxes	Secure print; Encrypted PDF print; Fax receipt; Fax polling
User box functionality	Reprint; Combination; Download; Sending (E-mail/FTP/SMB and Fax); Copy box to box

SYSTEM FEATURES

Security	ISO15408 Common Criteria; IP filtering and port blocking; SSL2; SSL3 and TLS1.0/1.1/1.2 network communication; IPsec support; IEEE 802.1x support; User authentication; Authentication log; Secure print; Kerberos; Hard disk overwrite (8 standard types); Hard disk data encryption (AES 256); Hard disk mirroring (opt.); Memory data auto deletion; Confidential fax receipt; Print user data encryption; Copy protection (Copy Guard, Password Copy) optional
Accounting	Up to 1,000 user accounts; Active Directory support (user name + password + E-mail + smb folder); User function access definition; Biometric authentication (finger vein scanner) optional; ID card authentication (ID card reader) optional; Authentication by mobile device (Android)
Software	store+find (opt.); convert+share (opt.); Personal Applications (opt.); Enterprise Suite (opt.); Data Administrator (user accounts & cost centres); Card solutions (opt.); Unix/Linux support; SAP support; EveryonePrint (opt.); PCounter (opt.); Web Connection



For more information regarding the ineo+ 658 please refer to the respective product homepage



- All specifications refer to A4-size paper of 80 g/m² quality.
- The support and availability of the listed specifications and functionalities varies depending on operating systems, applications and network protocols as well as network and system configurations.
- The stated life expectancy of each consumable is based on specific operating conditions such as page coverage for a particular page size (5% coverage of A4). The actual life of each consumable will vary depending on use and other printing variables including page coverage, page size, media type, continuous or intermittent printing, ambient temperature and humidity.
- Specifications and accessories are based on the information available at the time of printing and are subject to change without notice.
- DEVELOP and ineo are registered trademarks/product titles owned by Konica Minolta Business Solutions Europe GmbH.
- Konica Minolta does not warrant that any specifications mentioned will be error-free.
- All brand and product names may be registered trademarks or trademarks of their respective holders and are hereby acknowledged.

