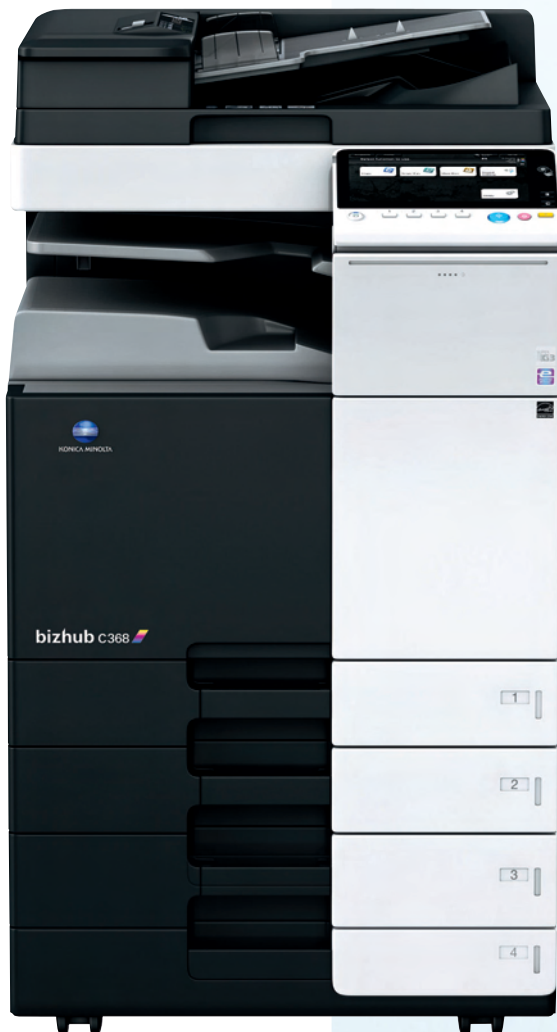




KONICA MINOLTA

bizhub C368/C308

A3



C368 **36** CL PPM **36** BW PPM

C308 **30** CL PPM **30** BW PPM

Giving Shape to Ideas

MFP to always provide you a better way, a comfort way. That's what really matters.



The simplicity and usability to fit in any working environment

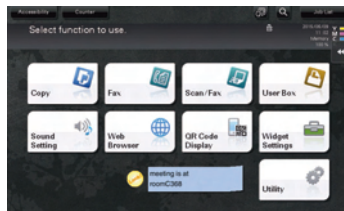
The product design

The bizhub C368 series adopts the easy and intuitive INFO-Palette design and smart user interface. To ensure, to always provide the same user experience in any business situation through the seamless operation no matter from the PCs, tablets or smartphones.



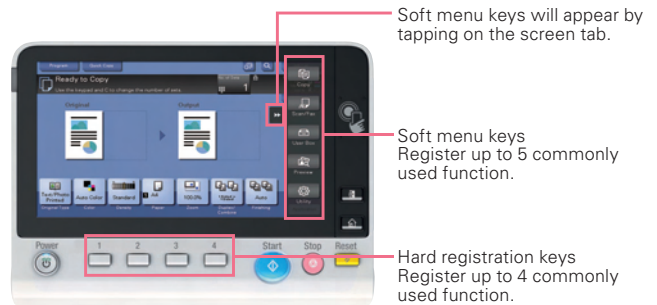
Widgets function

Text boxes, icons, or GIF animations can be posted on the MFP operation panel like the sticky notes. These can be used to display office communications, MFP usage rules, or warnings.



The 9 inch operation panel

The 9 inch operation panel provides user friendly interface and intuitive operability. 4 hard menu keys at the bottom of the panel and the on-screen soft menu keys can allow user to register up to 9 commonly used functions such as copy, scan/fax, preview or soft numeric keypad.



Print from anywhere, anytime with the most advanced wireless, mobile and cloud technology

The Mobile Touch Area

Mobile Touch Area is newly added on the operation panel. Mobile device connection is now possible via NFC (Near Field Communication) and Bluetooth LE (Low Energy)*1 technology. The connection will enable mobile features*2 such as pairing, print, scan, and user authentication. To execute these features, simply touch your device to the Mobile Touch Area then the PageScope Mobile application will do rest of the work.



*1 Optional Device Connection I/F Kit EK-609 is required. (Available soon)

*2 Android devices must be installed with Android 4.4 or later and NFC antenna that supports HCE (Host Card Emulation). For the iOS devices, iPhone 4s or later, 3rd generation or later iPad and iPad mini are compatible with Bluetooth LE.

Standard web browser

The multi-touch UI in the operational panel can be used to display and print out web page contents. It is convenient for print required portions of PDF files that can be viewed on websites, or to print maps for places you are about to visit.

Wireless LAN (AP mode) support

The MFP becomes a wireless LAN Access Point*3 to allow direct wireless connection between mobile devices and bizhub. Devices brought into the office will be able to directly connect with bizhub and are securely separated from existing company LANs. PageScope Mobile will enable more convenient use, as wireless set up can be completed between a mobile device and bizhub simply by reading the QR code that is displayed on the machine panel.

*3 Optional Upgrade Kit UK-212 is required.

To connect instantly without print drivers to the industry standard mobile technologies

AirPrint

Apple's standard printing system compatible with iOS 4.2 and Mac OS 10.7 or later. A compatible printer on your wireless LAN can be used.



Mopria Print Service

Wireless printing technology provided by Mopria Alliance. Allows you to print from devices installed with Android 4.4 or later.



Google Cloud Print

With the compatible software installed, you can print from any locations via the internet regardless OS or device types.



* Google Cloud Print Setup and Google account registration are required.

* Optional Upgrade Kit UK-211 is required.

Konica Minolta Print Service

Print directly to bizhub via a wireless LAN from Android 4.4 or later installed devices.



PageScope Mobile

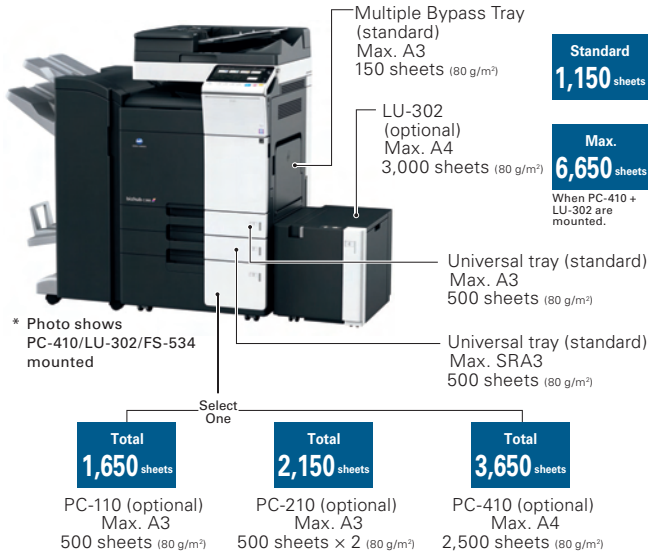
A genuine mobile print application offered by Konica Minolta. To allow usage of wide range of bizhub functions such as duplex print, security print, staple and punch.



Plenty of paper feed options

The standard paper capacity of the MFP is 1,150 sheets. With the optional paper feed options, the paper capacity can be increased up to 3,650 sheet. The optional Large Capacity Unit will bring the maximum of 6,650*1 sheets to reduce overall MFP downtime caused by paper replenishment.

*1 When optional Paper Feed Cabinet PC-410 and Large Capacity Unit LU-302 are mounted.



Fiery controller

Optional Fiery Image Controller*2 for graphics applications can produce professional and high-level printing quality environment. The Fiery's various settings can be configured by using the MFP web browser.

*2 Optional Fiery Image Controller IC-416, Video Interface Kit VI-508 and Upgrade Kit UK-211 are required.

Multifunction finisher

The optional finisher allows you to perform many high-level finishing such as three sheets stacked tri-fold, stapling, punching, and saddle stitching. User can produce internal documents more easily and professionally.

Emperon printing system

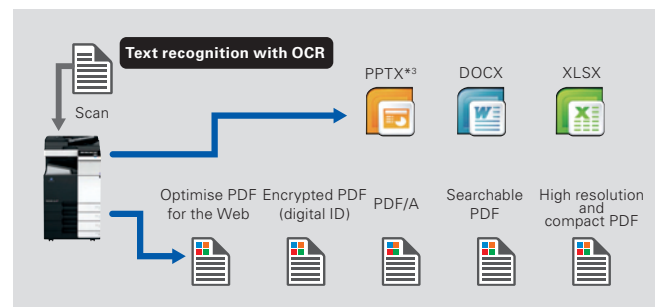
Konica Minolta's proprietary Emperon unified printing system is equipped with network printing functions as a standard feature. It provides comfort print experience in any office network environment regardless OS types.



Documents digitalisation

Paper documents can be scanned and converted into PDF and OOXML file formats. Choose a file format suitable for your work objective. To widen the potential for documents secondary usage.

Image of Scan to PDF and Scan to OOXML (when LK-110 v2 is mounted)



- OCR processing enables text searching.
- Images and text can be reused in applications such as Microsoft Office.

* Optional Upgrade Kit UK-211 is required.

*3 Although pptx conversion is a standard function of this machine, optional i-Option LK-105 v4 or LK-110 v2, and Upgrade Kit UK-211 are required to use OCR.

Flexible and advanced security features to protect valuable information

Authentication on the MFP main unit

Authentication can be performed directly on the main unit. Detailed access control can be set up for each function including copy, print, scan, and fax*1.

*1 Optional Fax Kit FK-513 is required.

IC card authentication

To authenticate*2 with various types of IC card*3. The authentication method also compliance with SSFC (Shared Security Formats Cooperation) standard. Besides the IC card, authentication can also be performed with any Android devices*4 that equipped NFC antenna.



*2 Optional Authentication Unit AU-201S is required.

*3 Compliant non-contact IC cards include FeliCa (IDm), SSFC, FCF, FCF (campus), FeliCa Private, and MIFARE (UID).

*4 Requires Android 4.4 or later that supports HCE (Host Card Emulation) or PageScope Mobile for Android v4.1 or later.

Biometric authentication

Your finger veins becomes the most accurate authentication tool. The biometric authentication is easy to implement but offer very high-level security.



* Optional Biometric Authentication Unit AU-102 and Working Table WT-506 are required.

HDD mirroring

Supports "Mirroring" which synchronises the main HDD data and the backup HDD data in real time. In the event of main HDD failure, operation automatically switches to the backup HDD which will drastically reduce the risk of data loss.

* Optional HDD Mirroring Kit HD -524 is required.

Server-less pull printing

Print jobs sent by user can be printed from any MFP in the office print group. To allows user to build a server-less pull printing system easier and with low introduction cost.

* A pull printing system consisting of a maximum of 10 MFPs can be created. It is necessary that all corresponding MFPs be in the same network.

* Optional i-Option LK-114 and Upgrade Kit UK-211 are required to be installed to each of the MFP.

TPM (Trusted Platform Module)

Control the confidential information with a TPM (Trusted Platform Module) security chip which encrypts and decrypts any confidential data. The confidential information will be encrypted and stored only in the dedicated storage area in the chip. To avoid unauthorised reading from the outside.

* Optional i-Option LK-115 v2 is required.

Screen display enlarge and colour reversal functions

The screen display enlarge function to enlarge the text on the buttons. The screen display colour reversal function to reverses the display colour while maintaining the same contrast ratio. For better visibility to help elderly users and users with low vision.



Detachable paper cassette

Paper cassette of the MFP is detachable. Jammed paper remained inside of the MFP can be easily remove. To reduce MFP downtime.



Environmental contribution is always the top priority

Usage of the recycled materials

Konica Minolta has made further advances on its unique chemical processing technology. It has also increased its use of recycled PC/PET and has raised the PCR ratio*1 to approximately 70%. This recycled material accounts for more than 25% of the weight ratio of the total resin volume in the main unit. The ratio of recycled materials in the surface area of the machine has increased to approximately 78%.

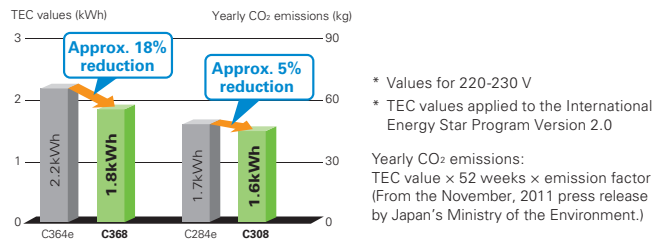
*1 PCR (post-consumer recycling): the ratio of municipally recycled materials used in the recycled materials.



Top class power consumption and TEC value in its class

The MFP CPU power set to turned off during the sleep mode. This results the top class 0.5 W power consumption ratio (during the sleep mode). The TEC value has also been reduced approximately 5-18%. More CO₂ emissions from MFP can be reduced.

Comparison of TEC values (in Europe and other regions) of previous models (bizhub C364e/C284e) and the bizhub C368 series.



Model shown is C368 with options.

bizhub c368/c308

| | | | | | | | | |
|--|--|--------------------------------|-----------------------|---------------------------------------|---------------------------------------|---------------------------------|-------------------------------|------------------------|
| C368 Colour B&W 36/36 ppm | C308 Colour B&W 30/30 ppm | Resolution 1,200 dpi | SRA3 | Dual Scan ADF 160opm Duplex | Dual Scan ADF 80opm Simplex | Biometric Authentication | IC-Card Authentication | Emperon Driven! |
| USB Print | Colour Internet Fax | Fax | Mobile Support | Bioplastic | Recycled PC/PET | Simitri with Biomass | | *1 Optional |

For more information please visit the bizhub Web site at

http://www.biz.konicaminolta.com/colour/c368_c308/index.html

Product appearance, configuration and/or specifications are subject to change without notice. This product is not available for some countries or regions.

KONICA MINOLTA, the KONICA MINOLTA logo and symbol mark, "Giving Shape to Ideas", bizhub, bizhub PRO, bizhub PRESS, magicolor, PagePro, PageScope, Simitri, Simitri HD, Simitri HD+, Simitri with Biomass, Emperon, S.E.A.D., S.E.A.D.II, Printgroove and Konica Minolta Optimised Print Services and their respective logos are registered trademarks or trademarks of KONICA MINOLTA, INC.

Evernote is a registered trademark or trademark of Evernote Corporation.

Google is a trademark or registered trademark of Google Inc. in the U.S. and other countries.

SharePoint is a registered trademark or trademark of Microsoft Corporation in the U.S. and other countries.

All other brands and product names are registered trademarks or trademarks of their respective companies or organisations.

Ecology & Environment

KONICA MINOLTA products are designed with the environment in mind.

- Energy Star
- RoHS Compliance
- WEEE Compliance
- Eco-friendly Toners
- Production at ISO Certified Factories



From consulting, system design, to operations, Konica Minolta offers total support to optimise your office output environment.

<http://www.biz.konicaminolta.com/services/ops>

Requirements for safe use

- Please read and follow the instruction manual to ensure safe operation.
- Only operate using appropriate power supply and voltage.
- Connecting the earth wire to an inappropriate place may cause explosion or electric shock. Please connect accordingly (Taiwan and the Philippines only).



KONICA MINOLTA, INC.

2-7-2 Marunouchi Chiyoda-ku, Tokyo, Japan

<http://www.biz.konicaminolta.com>